



Whitestone

Jumeirah Garden City, Dubai, UAE



YOUR NEW HOME

# Welcome

Welcome to Whitestone, a hidden gem nestled in the prestigious neighborhood of Jumeirah Garden City, Dubai. This exclusive address embodies the epitome of luxury living, where timeless elegance meets contemporary sophistication. Step into a world of opulence, where every detail has been meticulously crafted to offer an unparalleled living experience. Prepare to embark on a journey of elegance and prestige, as we invite you to discover the true essence of luxurious living in the heart of Dubai's most coveted locale.









# Timeless Elegance

At Whitestone, you will discover a harmonious blend of timeless elegance and modern luxury. From the moment you step inside the grand lobby, you'll be captivated by the surrounding opulence. The meticulously branded interiors feature high-end finishes, bespoke furnishings, and state-of-the-art technology, creating a sophisticated ambiance that reflects the epitome of refined living. Each apartment boasts spacious layouts and offers unobstructed city views, providing an unparalleled sense of tranquility amidst the bustling metropolis.

As evening sets in, enjoy a coffee on your private balcony, where the city view meet perfect privacy. This elegant space offers a serene escape, combining comfort and sophistication with a stunning backdrop of the city lights.

Premium experience

Skyline





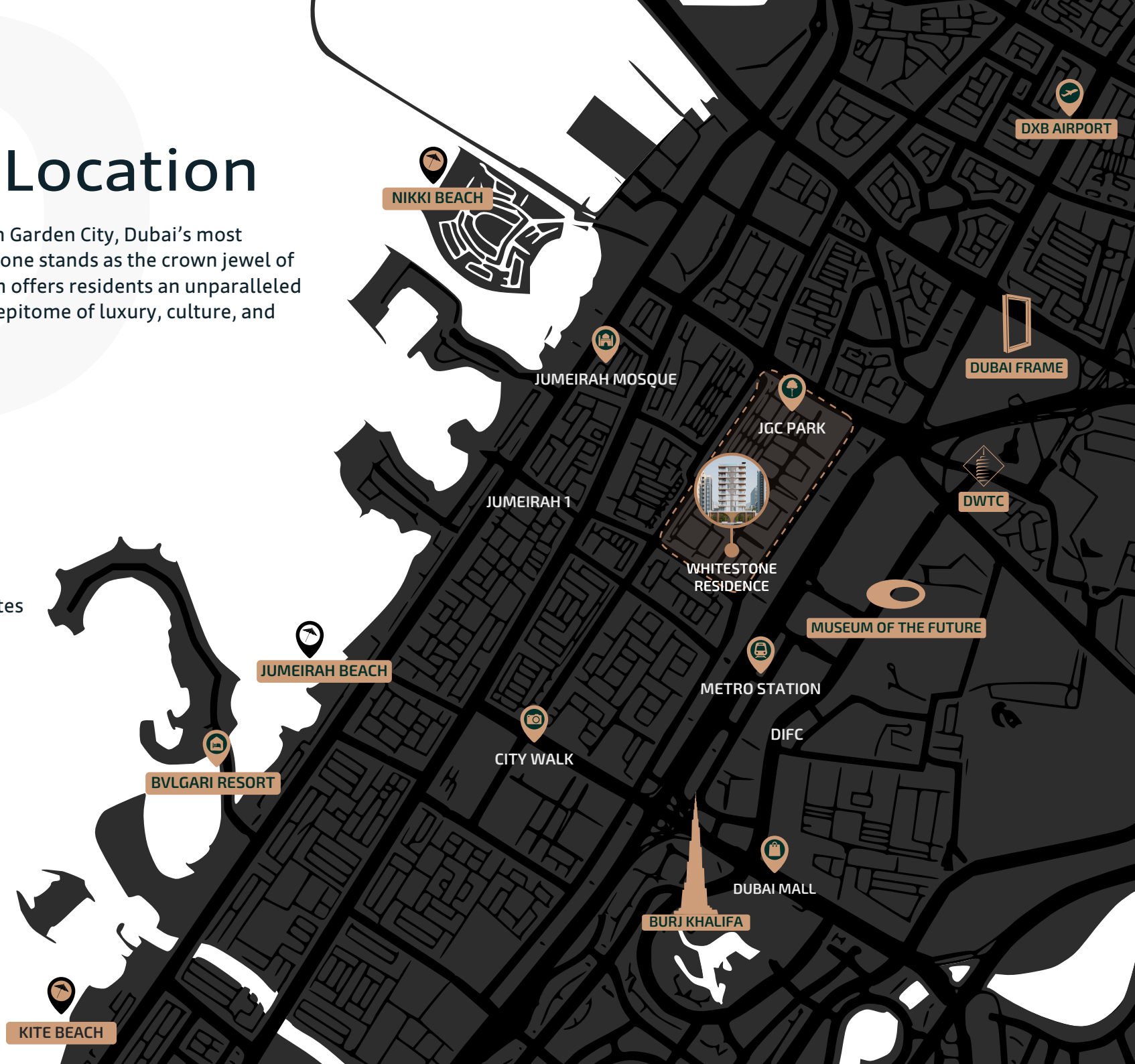
# Premium Location

Nestled in the heart of Jumeirah Garden City, Dubai's most coveted neighborhood, Whitestone stands as the crown jewel of refined living. Its prime location offers residents an unparalleled experience, surrounded by the epitome of luxury, culture, and sophistication.

10 Minutes	Dubai Mall
10 Minutes	City Walk
10 Minutes	DIFC
15 Minutes	Dubai Airport
15 Minutes	Mall of the Emirates
20 Minutes	Kite Beach
25 Minutes	Dubai Marina
25 Minutes	Palm Jumeirah

## Surroundings

Shopping Malls  
Fine Dining Restaurants  
Religious Buildings  
Beauty Salons  
Premier Health Clubs  
Entertainment Venues  
Prestigious Schools  
Luxury Hotels



# Elegant Transparency

Whitestone striking elevation is a testament to its transparent, open, and inviting design. The expansive balconies, adorned with our signature gold-branded louvers, offer both a sense of luxury and essential privacy, creating intimate outdoor spaces perfect for relaxation and taking in the breathtaking views of Dubai. The rooftop infinity pool enhances the building's modern aesthetic, while the podium garden beautifully conceals the parking area, blending nature with urban sophistication.

Intimate Outdoor Spaces for Relaxation.

Refined  
Retreats







EXCLUSIVE

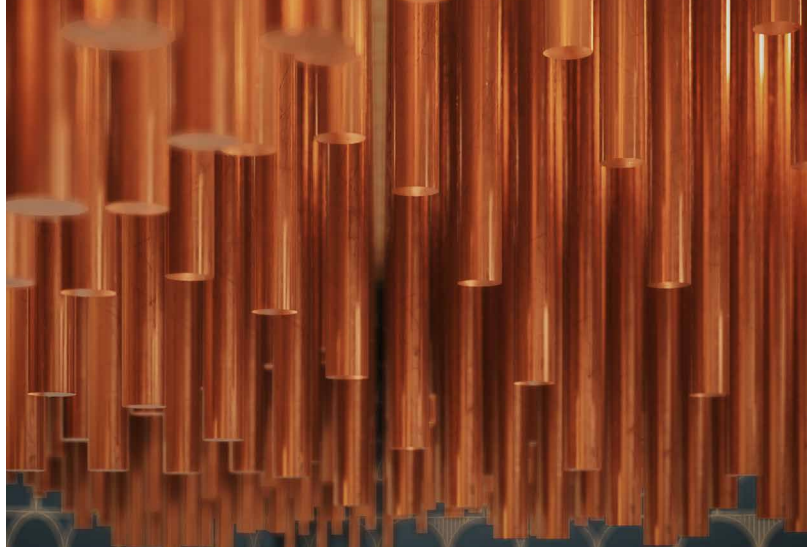
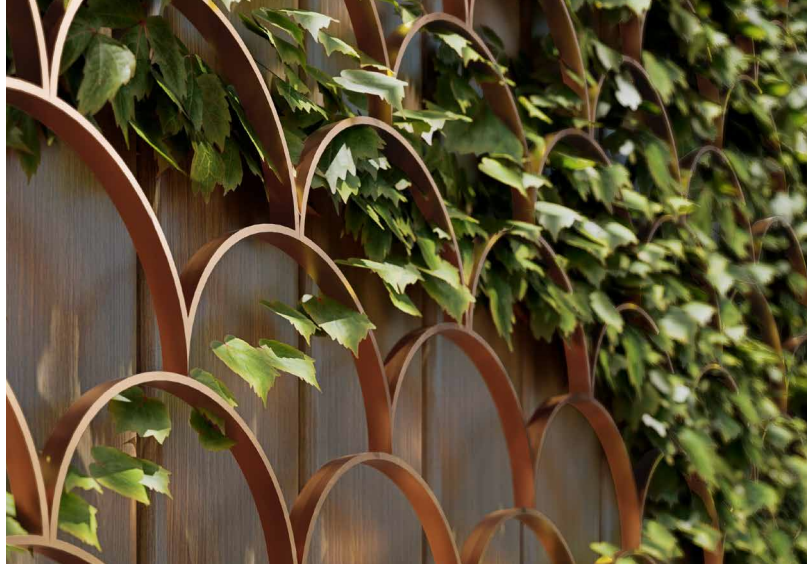


# A Privileged Address in Dubai

At Whitestone, luxury and light come together to create a truly exceptional living experience. This boutique residential tower in the heart of Dubai is an architectural gem, defined by its elegant horizontality and distinctive louvers that balance transparency with privacy. Surrounded by iconic landmarks, designer boutiques, and Michelin-starred restaurants, Whitestone offers a lifestyle that embodies the pinnacle of city living. Every detail, from the spacious, light-filled interiors to the refined finishes, reflects our commitment to luxury and design excellence.

Welcome to Whitestone.

## Prestige Living



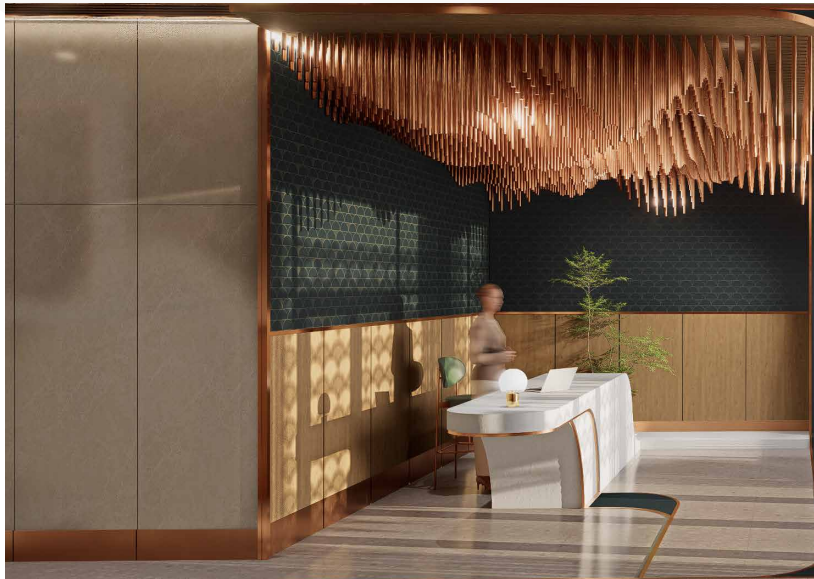
## Branded Experience





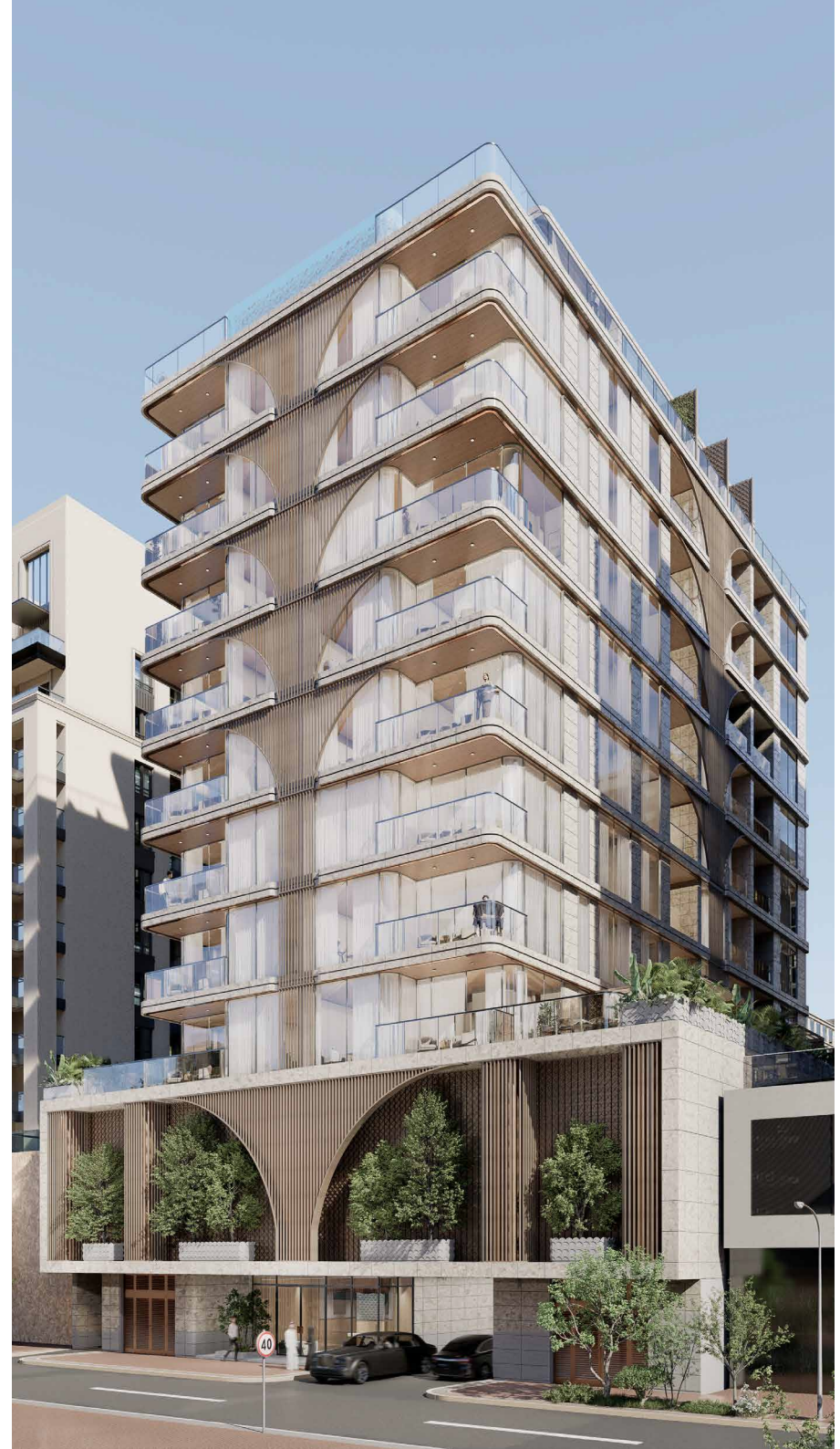
# Grand Entrance

Upon arriving home, the secure, two-level parking offers peace of mind, while the illuminated lobby, with its transparent glass facades, draws you into a world of refined sophistication. The sleek, modern design showcases the beauty of natural light, enhancing the sense of openness and luxury. Greeted by the attentive concierge, every moment at White Stone is crafted to elevate your living experience, blending elegance with an unparalleled connection to the surrounding environment.



Elegance &  
Light

The White Stone Experience





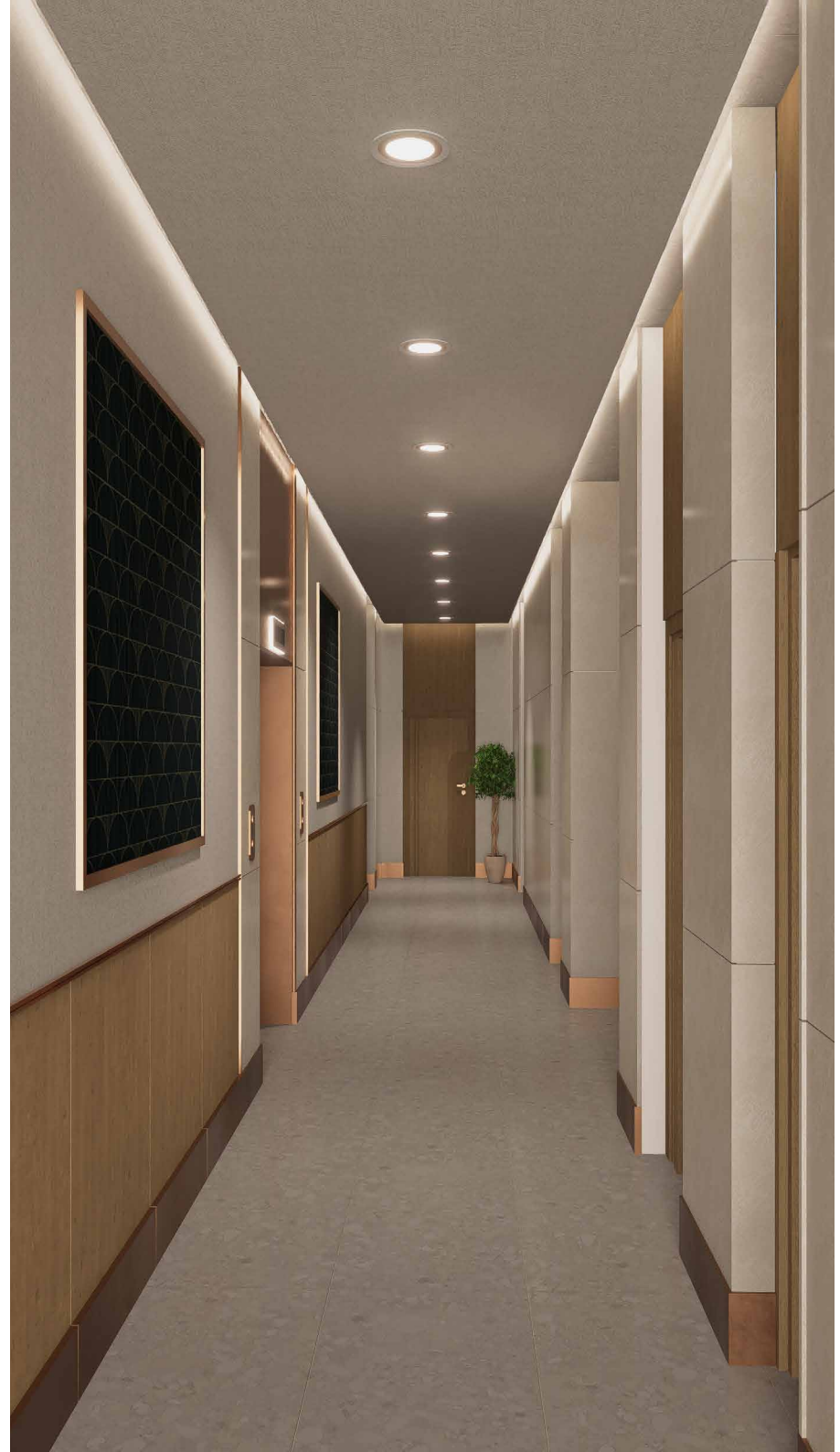


# Elegant Transition

As you move from the grand entrance into the corridor, luxurious design surrounds you—marble floors, rich wood panels, and bespoke terrazzo forming a refined foundation, while copper accents glimmer under soft, atmospheric lighting. Branded wallpaper adds a tailored touch, enhancing Whitestone's exclusivity. With each step, you're drawn closer to the comfort of home. Just beyond, your private terrace offers a serene retreat, where panoramic city views and cool evening breezes provide the perfect escape, as the brilliance of city lights mirrors the tranquility of your space.

## Opulent Corridor

A Journey Through Refined Luxury







Calm  
Refuge

Cityscape and Relaxation Combined





# Exquisite Design

After a long day at work, you return to the embrace of your family in a living room that seamlessly blends luxury with coziness. The room, adorned with rich wooden flooring and elegant terrazzo, exudes an inviting warmth. The emerald green couch, paired with refined wooden furniture and gold accents, creates a perfect retreat for relaxation. Branded wallpaper enhances the sophisticated ambiance, while expansive windows, shielded by Whitestone's signature louvers, frame breathtaking city views, balancing both privacy and openness.

Refined  
Living

Elegance in Every Detail





# Living Room

1-Bedroom Apartment







# Evening Bliss

As you move into the kitchen, the luxury and functionality continue seamlessly. Marble countertops gleam under soft lighting, while warm wood flooring and copper accents add an elegant touch. Harmonious color tones and sophisticated materials blend effortlessly, creating a serene yet inviting environment. The spacious, intimate kitchen invites you to prepare family meals, with the adjacent dining area featuring our exclusive wallpaper, adding a unique flair. This elegant space transforms everyday moments into cherished gatherings filled with connection and joy.

Gourmet  
Space

Sophisticated Dining Awaits



Luxurious  
Kitchen

—— 2-Bedroom Apartment



# Modern Serenity

As evening falls, you retreat to the bathroom—a sanctuary of simplicity and elegance. This thoughtfully designed space serves not only as a place for washing and relaxation but also as a refined powder room for your daily rituals. Terrazzo flooring adds a subtle texture underfoot, while the clean lines and minimalist fixtures create a serene atmosphere. It's a space where you can unwind in peace, leaving the day's stresses behind, all within an environment that perfectly balances contemporary style and comfort.



Elegant  
Simplicity

Relax in Modern Comfort



# Comfort Meets Style

As morning light fills your bedroom, you wake to a serene space designed for comfort and elegance. The bedroom features generous windows that invite natural light and offer panoramic city views. Stepping into the spacious living room, you're greeted by more stunning vistas framed by floor-to-ceiling glass. Enjoy your coffee on the balcony, where sleek louvers provide privacy without compromising the breathtaking scenery. Every detail in your Velora apartment is crafted to balance transparency and privacy, enhancing your living experience with effortless sophistication.



Morning  
Serenity

Transparency Perfected















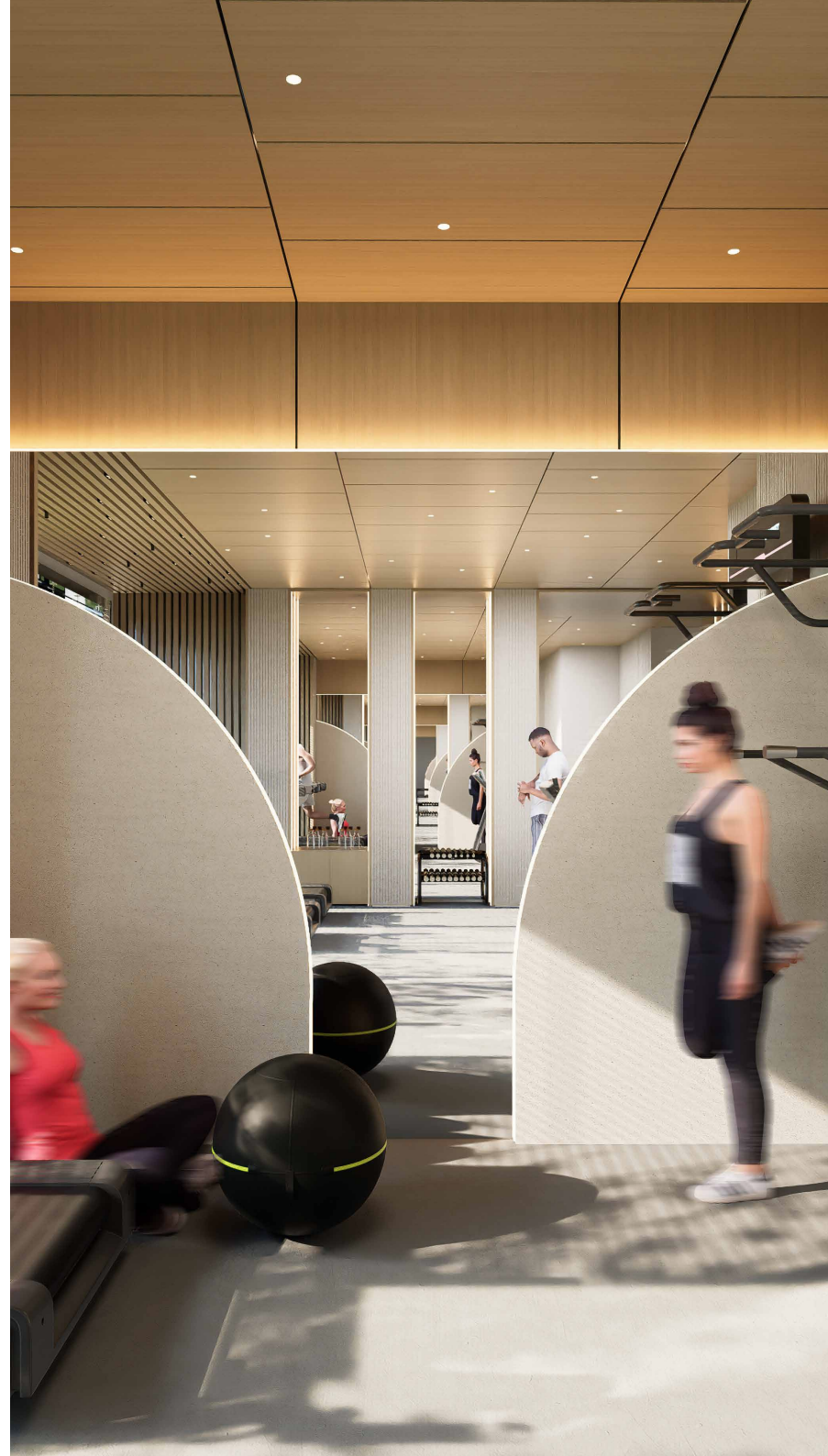
# The Rooftop Retreat

On a Saturday morning, you begin with a revitalizing workout at the rooftop gym. Following your exercise, you take a refreshing swim in the pool, where panoramic views of Dubai enhance your experience. As evening approaches, the BBQ area becomes the perfect setting for a relaxed gathering with friends under the stars. At Whitestone, every detail is made to ensure your leisure time is both luxurious and memorable.



Elevated  
Wellness

Work Out, Wind Down







# Infinite Oasis

Luxury Swimming with Skyline Views





24

# Sky Lounge

Rooftop Comfort with a Bar and BBQ Area



A modern rooftop terrace with a bar, lounge area, and stairs. The terrace features a bar with a built-in grill and sink, surrounded by wooden cabinetry. There are several lounge chairs with blue and grey cushions, a low coffee table, and a set of wooden stairs leading up to a higher level. The terrace is enclosed by a glass railing and has a concrete overhang above the bar area. The background shows a city skyline with various buildings.

# Sky Bar

Elevated Drinks with Stunning Views





Elevated  
Lifestyle

Gym, Pool, and Rooftop Bliss in One View





# · Contact

[sales@whitestonejumeirah.com](mailto:sales@whitestonejumeirah.com)